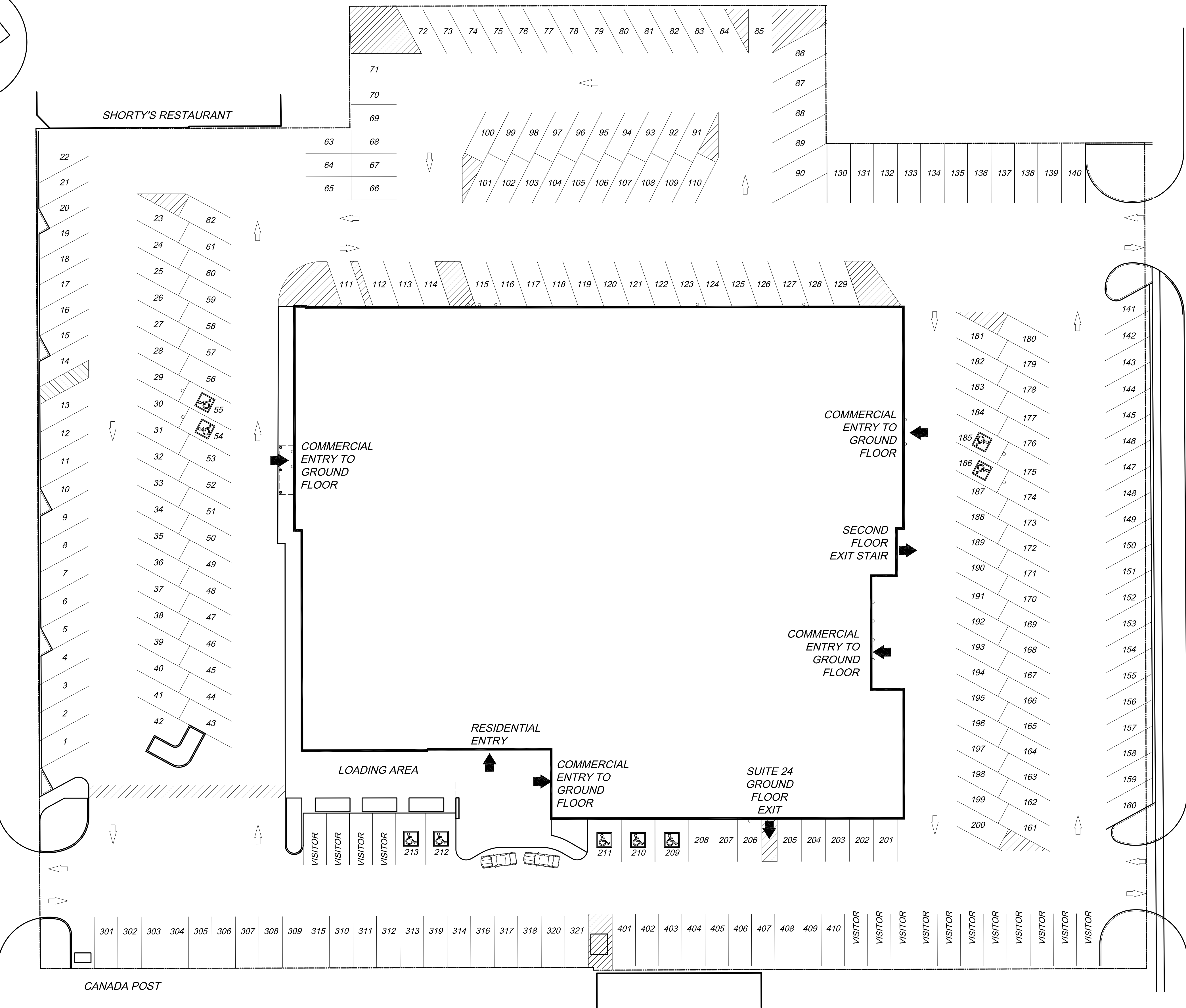


LEGAL INFORMATION SHOWN IS TAKEN FROM SURVEY OF PART OF
 LOTS 2 AND 5
 LOTS 3 AND 4
 EAST OF SCROPE STREET
 (THIRD AVENUE EAST)
 AND
 WEST OF MURDOCH STREET
 (FOURTH AVENUE EAST)
 CITY OF OWEN SOUND
 COUNTY OF GREY
 PREPARED BY
 ZUBEK, EMO, PATTEN AND THOMSEN, LTD., O.L.S.
 COLLINGWOOD, ONTARIO

3rd Ave. East

4th Ave. East



← COMMERCIAL ENTRANCE

PARKING SUMMARY:
 204- COMMERCIAL PARKING SPACES
 9 - DESIGNATED BARRIER FREE (B.F.) PARKING SPACES
 213 - TOTAL COMMERCIAL PARKING SPACES
 31 - DESIGNATED RESIDENTIAL PARKING SPACES
 15 - DESIGNATED RESIDENTIAL VISITOR PARKING SPACES
 46 - TOTAL RESIDENTIAL PARKING SPACES
 259 - TOTAL PARKING SPACES PROVIDED

SCHEDULE A

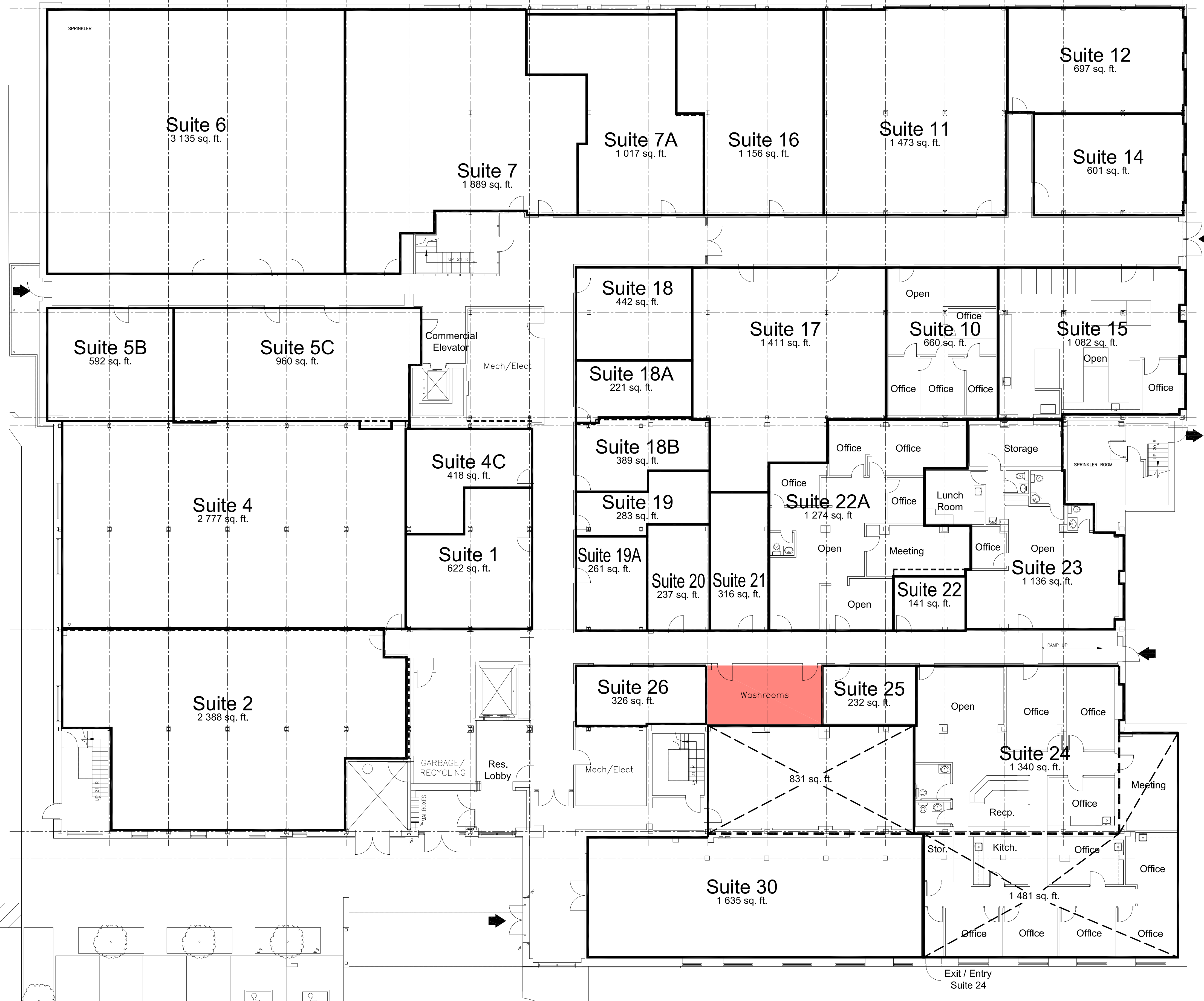
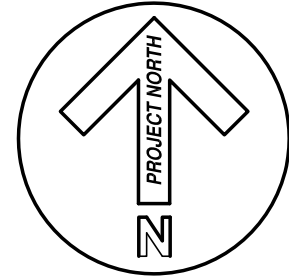


945 THIRD AVENUE EAST
 OWEN SOUND, ONTARIO

G.M. DIEMERT ARCHITECT INC.
 957 FOURTH AVENUE EAST
 OWEN SOUND, ONTARIO
 SUITE #201 N4K 2N9
 (519)376-1975

Site Plan
 January 31, 2017

Z:\2017\1206\Professional\1206\SitePlan.dwg Jan 31, 2017 4:09pm



KEY - ACCESS WASHROOMS

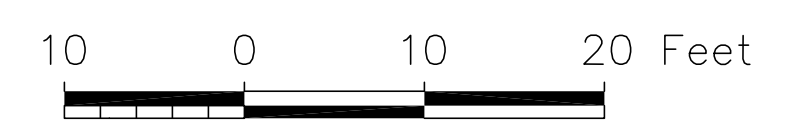
Areas shown on this drawing as was received from owner and as derived from Sketch of Unit Areas completed by Zubek, Emo, Patten & Thomson Ltd. signed and dated Dec. 20, 2016, Job No. 2012-03

SCHEDULE B



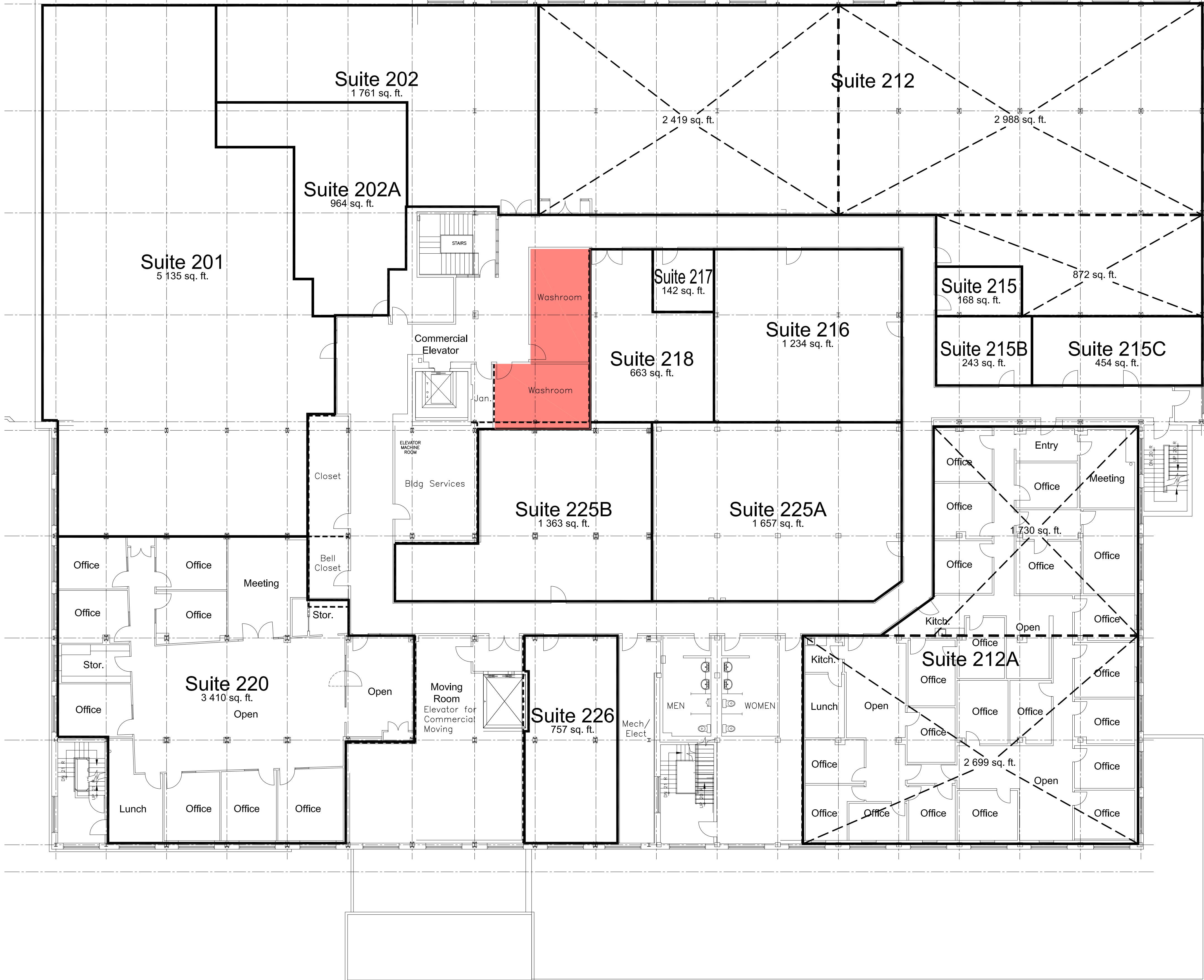
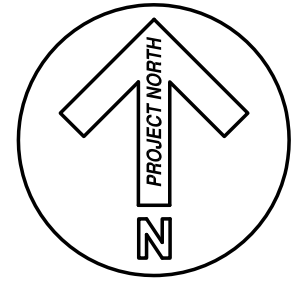
945 THIRD AVENUE EAST
OWEN SOUND, ONTARIO

G.M. DIEMERT ARCHITECT INC.
957 FOURTH AVENUE EAST
OWEN SOUND, ONTARIO
SUITE #201 N4K 2N9
(519)376-1975



Ground Floor Level
January 31, 2017

Z:\2012\1206\ProfesBldg05\201601\PEFA_03D.dwg Jan 31, 2017 - 4:28pm



KEY - ACCESS WASHROOMS
1 B.F. STALL WITHIN EACH

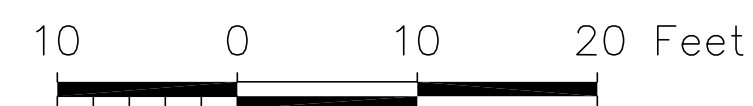
Areas shown on this drawing as was received from owner and as derived from Sketch of Unit Areas completed by Zubek, Emo, Patten & Thomson Ltd. signed and dated Dec. 20, 2016, Job No. 2012-03

SCHEDULE C



945 THIRD AVENUE EAST
OWEN SOUND, ONTARIO

G.M. DIEMERT ARCHITECT INC.
957 FOURTH AVENUE EAST
OWEN SOUND, ONTARIO
SUITE #201 N4K 2N9
(519)376-1975



Second Floor Level

January 31, 2017

2A:2012\1206P\res\Bldg\201 601yRPA\030.dwg Jan 31, 2017 4:40pm